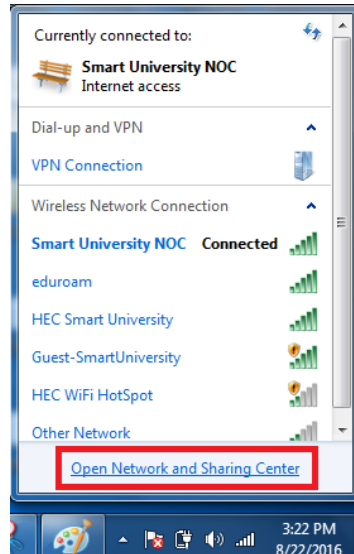


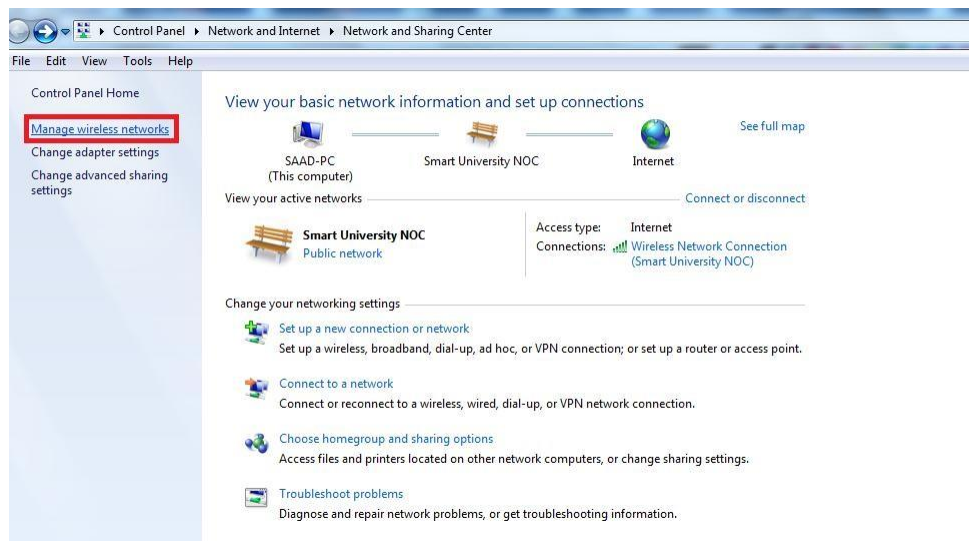


# Windows 7 Configuration of HEC Smart University Connectivity Manual

- Open 'Network and Sharing'



- Go to 'Manage Wireless Networks'

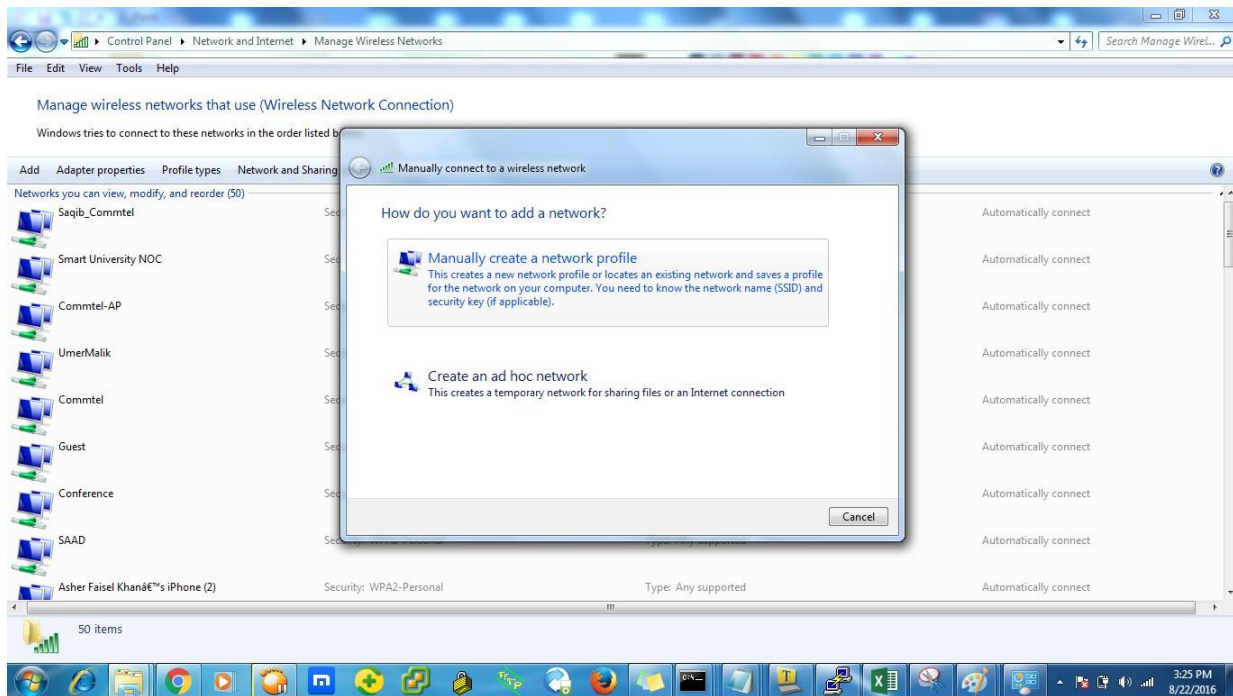




- Click on 'Add'

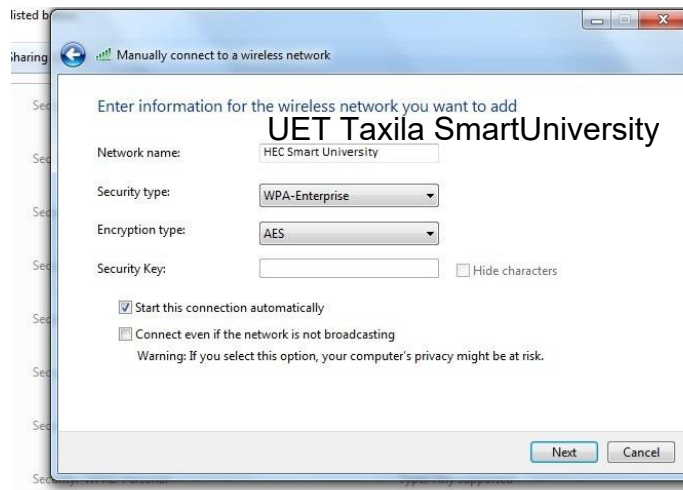


- Choose 'Manually Create a network profile'

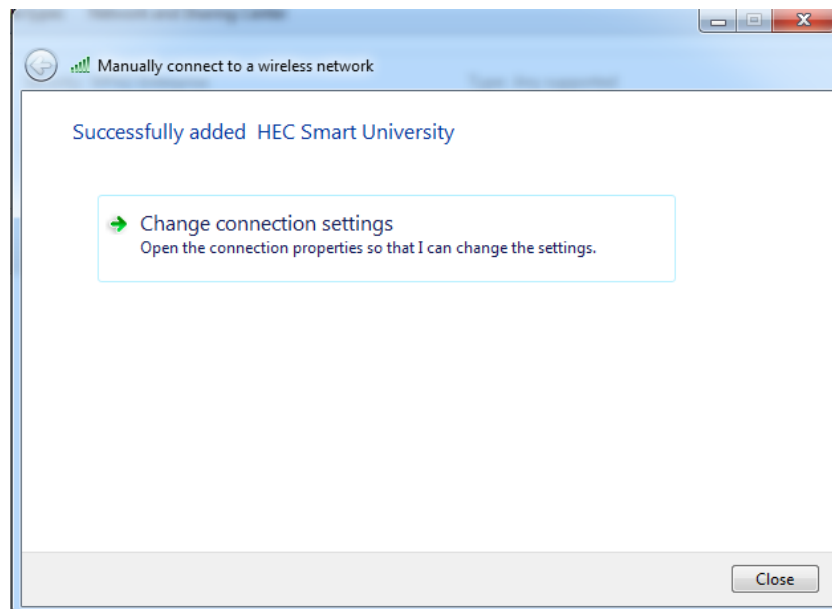




- ~~On network name write “HEC Smart University”~~ UET Taxila Smart University
- Security type ‘WPA-Enterprise’
- Encryption Type ‘AES’
- Leave Security Key ‘Blank’
- Click on ‘Next’

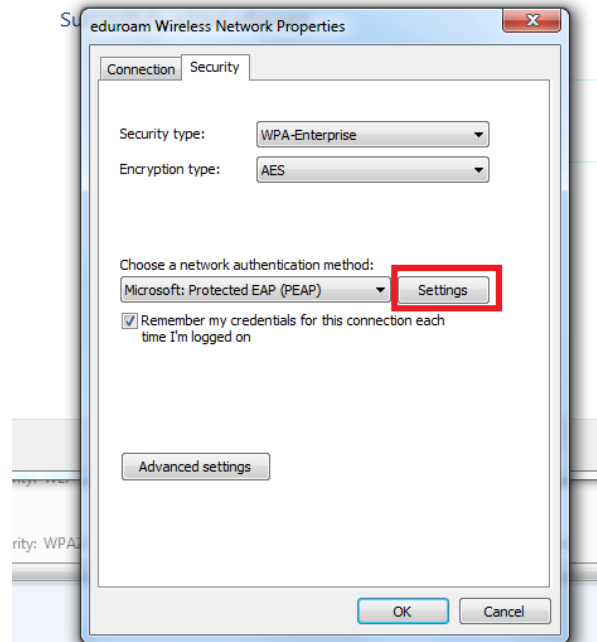


- Go to ‘Change Connection Setting’

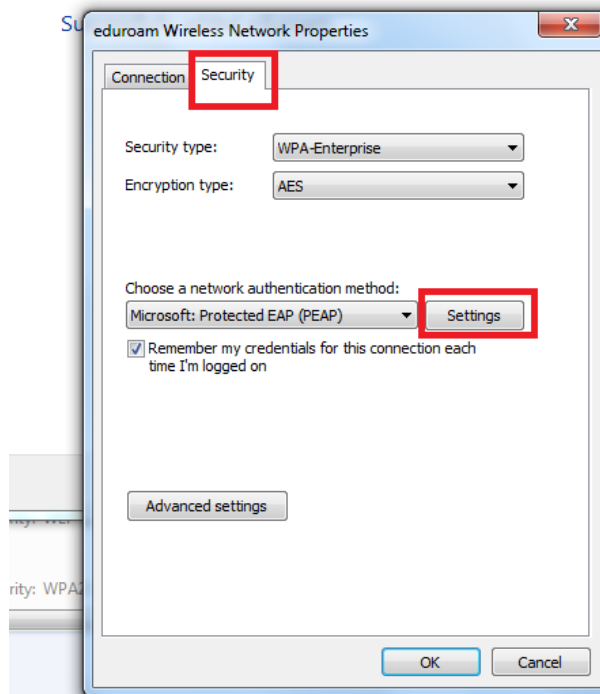




- Select Security Type 'WPA-Enterprise'
- Encryption Type 'AES'
- Network Authentication Method: Microsoft: Protected EAP (PEAP) and then click setting

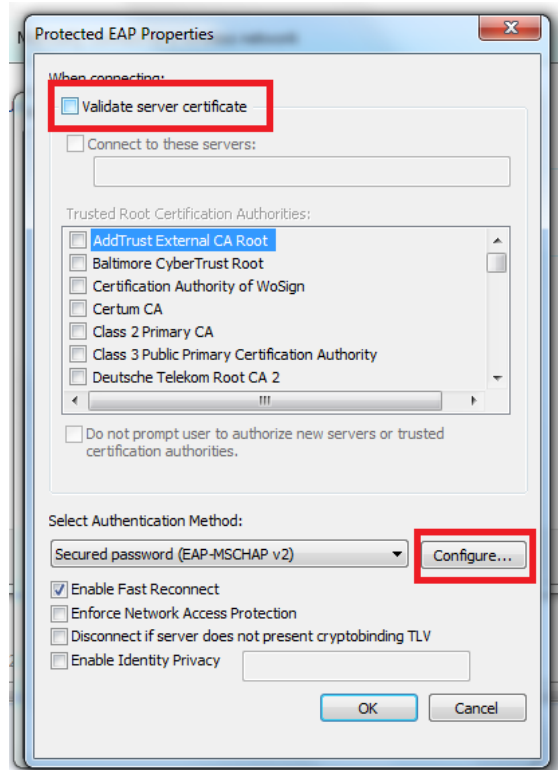


- Go to 'Security' Tab





- Uncheck 'Validate server certificate'
- Click on 'Configure'



- Uncheck Automatically use my windows logon name and password (and domain if any) press OK



- Press 'Ok'



- Forget/Disconnect all Networks
- Enter your Institute ID and Password. Your user ID must be appended with @hec.gov.pk (e.g. test@hec.gov.pk).



- Now you are ready to connect

